

Salt.

REFRESH TO RENT | COMPLEMENTARY ASSESSMENT

PROJECT INSPIRATION



Consultation - x/xx/xxxx

*elevated
living room*



*warm, comforting
bedrooms*



*purposeful
dining room*



painted wainscoting

Property Address

KITCHEN

RECOMMENDED CHANGES

- New barstools
- Cabinet knobs to add contrast
- Paint walls
- Update faucet
- Window treatments
- Accessories



DINING ROOM

RECOMMENDED CHANGES

- Dining furniture
- Window treatments
- Paint walls
- Update lighting fixtures
- Accessories



SUNROOM/POOL HOUSE

RECOMMENDED CHANGES

- Update furniture - an additional bed or sleeper sofa is critical for generating revenue
- Window treatments
- Paint wainscoting
- Light fixtures
- Art/mirrors



LIVING ROOM

RECOMMENDED CHANGES

- Update furniture
- Window treatments
- Paint walls
- Light fixtures
- Art/mirrors



BEDROOMS 1, 2 & 3

RECOMMENDED CHANGES

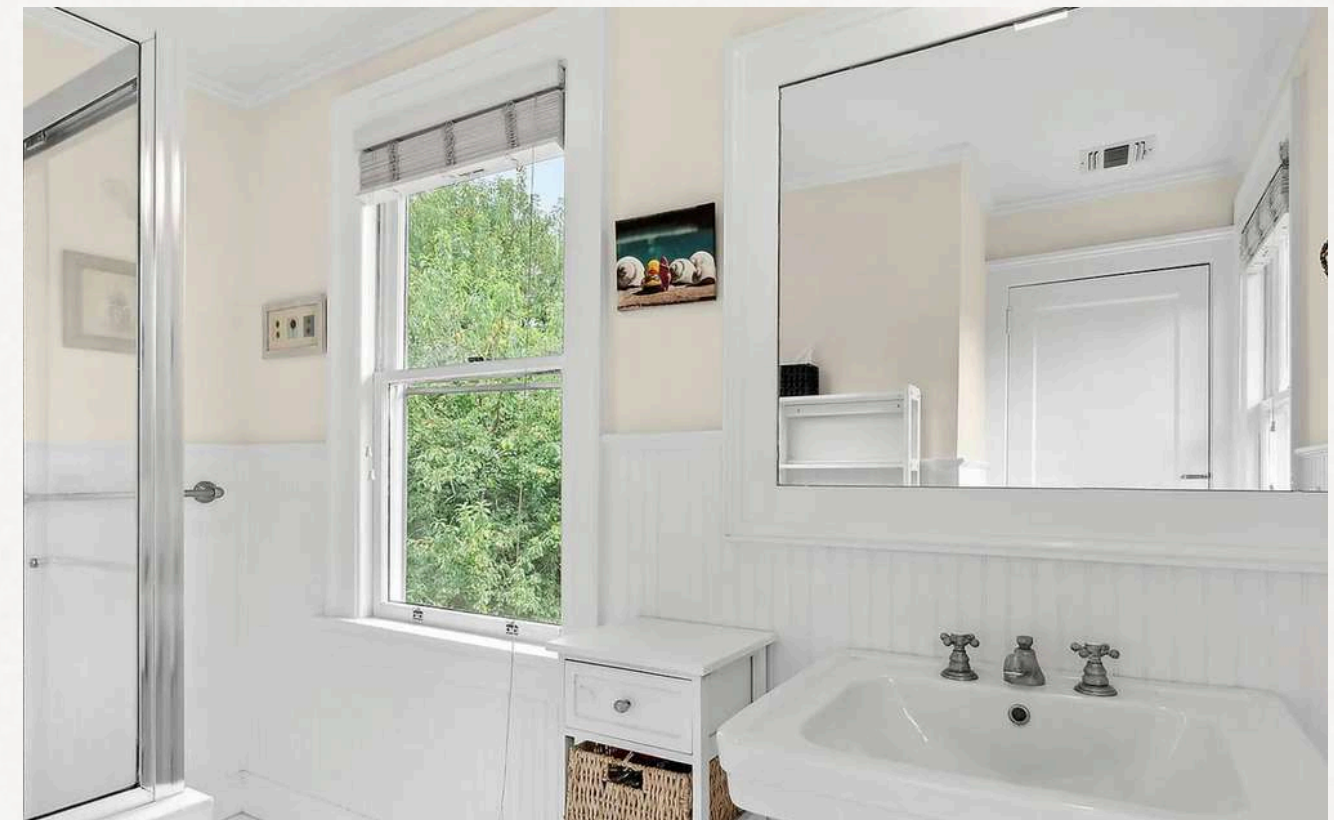
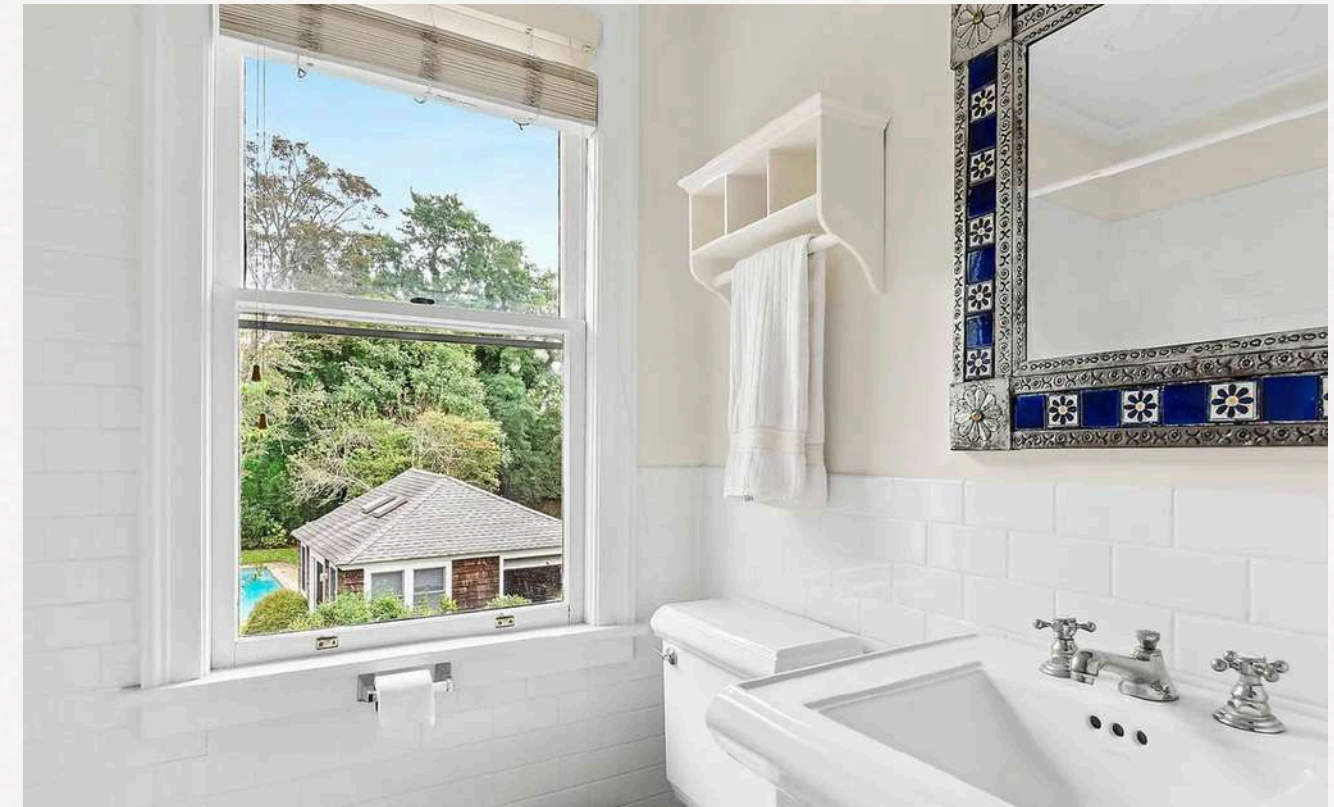
- Update furniture and explore layout options - King/Queen mattresses and a double room if desired
- Window treatments
- Paint walls
- Light fixtures
- Art/mirrors



BATHROOMS 1, 2, 3 & 4

RECOMMENDED CHANGES

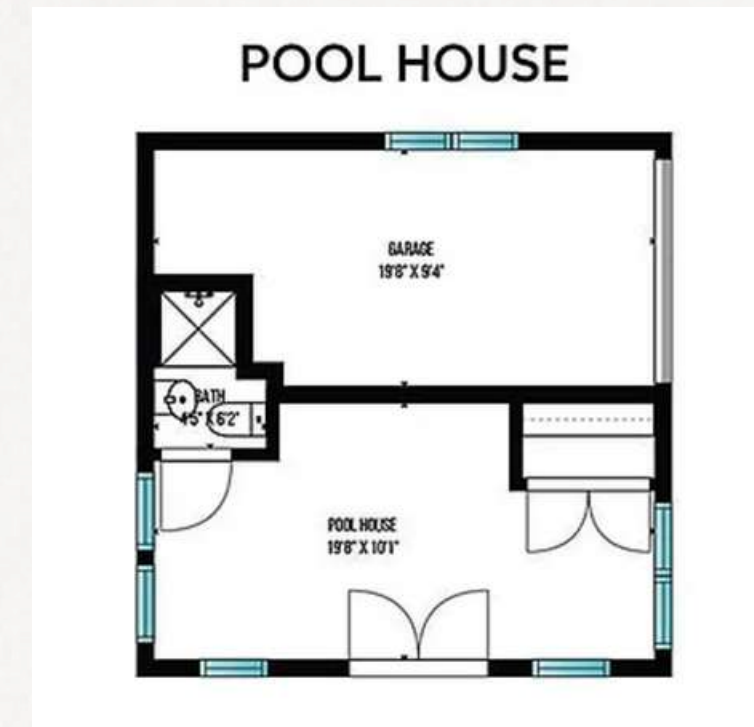
- Paint walls
- Window treatments
- Bathroom hardware
- Art/mirrors
- Accessories



POOL HOUSE

RECOMMENDED CHANGES

- Transform into a livable space
- Living room with sleeper sofa
- Guest house/bedroom



NEXT STEPS

PROJECT PHASING

- Programming and Kickoff - Understand the client's design needs and preferred design direction.
- Space Planning - Explore potential layout options.
- Design Development I - Explore FF&E options to understand design direction and the client's preferences.
- Design Development II - Refine FF&E selects and space plan, provide a detailed budget, and finalize all design decisions.
- Construction Documents - Issue detailed construction documents outlining locations of all FF&E selects to the GC.
- Procurement - Purchase all FF&E selects.
- Construction Administration - Salt. will coordinate with the GC as needed during construction administration to remedy any issues that arrive in the field and answer any questions.

DESIGN MEETINGS

- Kick Off Call: Define design intent, get to know the clients preferred style and programming needs.
- Design Meeting 1: Salt. will present Architectural layouts and discuss different potential space plan options, including inspiration imagery as needed.
- Design Meeting 2: Salt. will present refined space plan options and (2) different design directions including FF&E selects.
- Design Meeting 3: Salt. will present a single refined design, including the final space plan and FF&E selects. A line by line budget will be provided following this call.
- Design Meeting 4: Salt. will present the final design including FF&E selects, budget and space plan.
- Construction Administration Meetings - Available as needed after construction has commenced.

Thank you!

Salt.

saltinteriors.co / [@_saltinteriors](https://www.instagram.com/_saltinteriors)